

Agilent FlipTop Inlet Sealing System

Installation Guide



Agilent Technologies

Notices

© Agilent Technologies, Inc. 2003

No part of this manual may be reproduced in any form or by any means (including electronic storage and retrieval or translation into a foreign language) without prior agreement and written consent from Agilent Technologies, Inc. as governed by United States and international copyright laws.

Manual Part Number

5188-2740

Edition

First edition, October 2003

Printed in USA

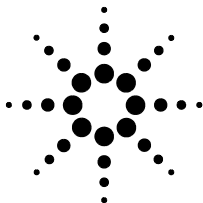
Agilent Technologies, Inc.

2850 Centerville Road

Wilmington, DE 19808-1610 USA

Warranty

The material contained in this document is provided "as is," and is subject to being changed, without notice, in future editions. Further, to the maximum extent permitted by applicable law, Agilent disclaims all warranties, either express or implied, with regard to this manual and any information contained herein, including but not limited to the implied warranties of merchantability and fitness for a particular purpose. Agilent shall not be liable for errors or for incidental or consequential damages in connection with the furnishing, use, or performance of this document or of any information contained herein. Should Agilent and the user have a separate written agreement with warranty terms covering the material in this document that conflict with these terms, the warranty terms in the separate agreement shall control.



Installation Guide

The FlipTop Inlet Sealing System allows quick and easy access to the inlet liner for more efficient liner removal and replacement.

To install the FlipTop Inlet Sealing System:

- 1** Prepare the inlet for a normal liner change. Remove the auto-sampler (if installed).
- 2** Turn off the inlet temperature and gas flow and set the oven to ambient temperature. Allow the inlet and oven sufficient time to cool.
- 3** Plug the column to prevent contamination.



- 4 Unscrew the inlet nut as shown in Figure 1. Removing the inlet cover allows for easier access.

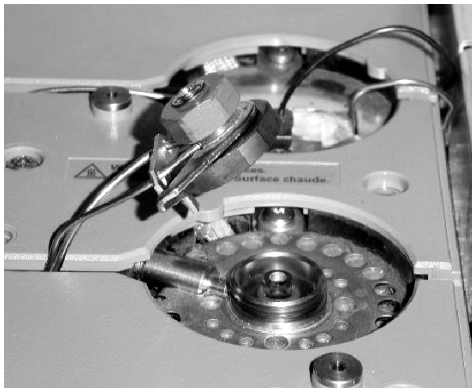


Figure 1 Preparing the inlet

- 5 Remove the snap ring holding the inlet nut assembly in place with the supplied snap ring pliers (see Figure 2). The nut and spacing ring should drop off from below the gas lines after the snap ring is removed (see Figure 3).



Figure 2 Removing the snap ring



Figure 3 Nut, spacing ring, and snap ring after removal

- 6** Replace the currently installed liner O-ring with the O-ring supplied with your FlipTop. This new O-ring ensures the correct sealing of the inlet.

NOTE

For replacement O-rings, order part number 5188-2741 for a pack of 10.

- 7** Place the FlipTop's lever arm assembly onto the inlet gas weldment as shown in Figure 4. Make sure the spacer ring is pointing downwards.

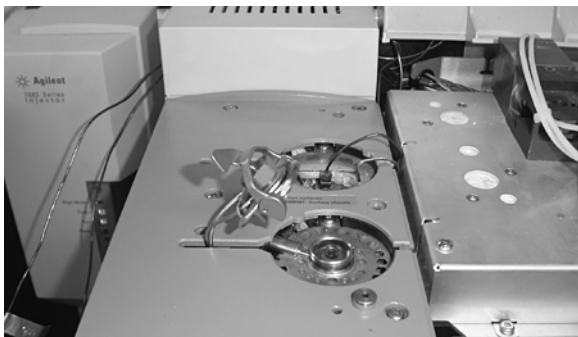


Figure 4 Positioning the lever arm assembly

- 8** Fasten the FlipTop's lever arm assembly in place with the new snap ring as shown in Figure 5. Keep the old snap ring as a spare.



Figure 5 Replacing the snap ring

- 9** Screw the adapter ring onto the top of the inlet body until it stops. Wind back one turn until the locking arm locates two pins 180 degrees apart when placed on top of the liner and O-ring in the inlet (see Figure 6).

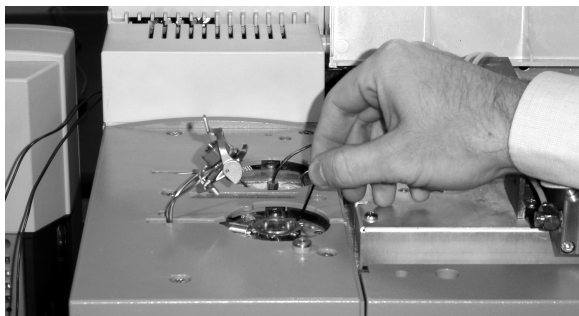


Figure 6 Positioning the adapter ring

10 Check the ability of the FlipTop lever arm to close over the arms on the adapter ring.

- If operation is smooth and effortless, carefully tighten the Allen head set screws, using the supplied Allen wrench, to maintain the position of the adapter ring as shown in Figure 6. Be careful not to strip the set screw.
- If too much force is required to lock the arm, loosen the adapter ring by turning it counter clockwise until the next pair of pins are in the correct orientation.
- If the lever is too loose, turn the adapter ring clockwise until the next pair of pins are in the correct orientation.

Repeat this procedure until the correct tightness is achieved.

11 Position the FlipTop over the inlet and close the lever arm as shown in Figure 7.

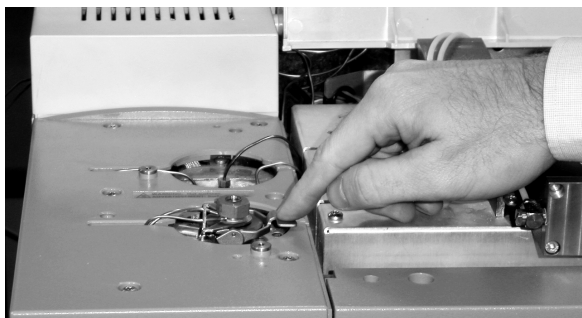
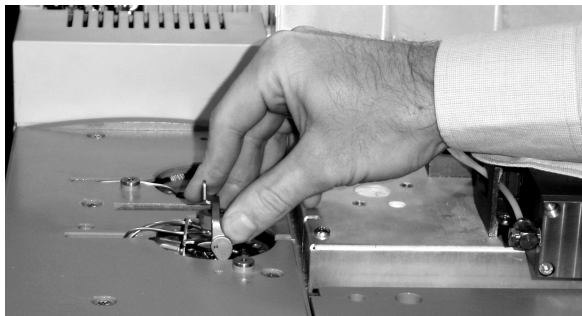


Figure 7 Positioning the FlipTop and closing the lever

12 Turn on the inlet flow and then the inlet temperature.
Check for leaks.

13 If used, reinstall the auto-sampler.

The instrument is now ready for use.



Agilent Technologies

© Agilent Technologies, Inc.

Printed in USA October 2003



5188-2740